

Beyond Shelter

Beyond Shelter demonstrates a new approach to refugee housing. The design accommodates up to four family members and features adaptable sleeping areas in an open living room setup, a lofted space, essential amenities, and private outdoor spaces. The essence of the project resides in its intricately textured 3D-printed walls, seamlessly merging with furniture and lighting to craft exceptionally personalized interiors.

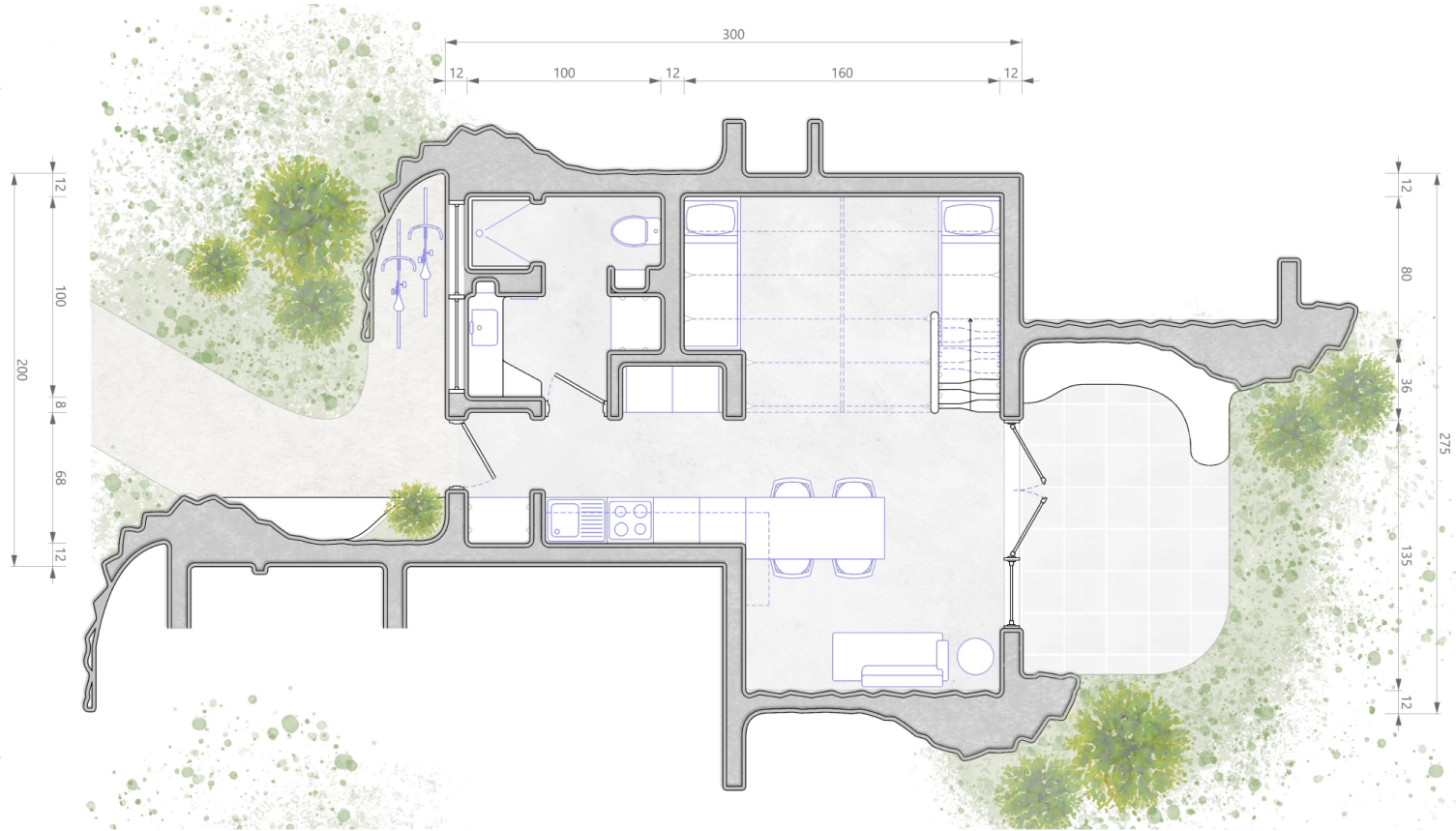


The award winner design of global architecture competition SXWX, Austin, TX - March 2024



| | | | | | |
|---|-----------------------------------|-----------|-----------------------------------|-------------------------------------|---|
| INITIATIVE 99 Beyond Shelter | BED 2 | BATH 1 | FLOORS 2 | LIVING SPACE 820 ft ² | GROSS FLOOR AREA 708 ft ² |
| ESTIMATED BUILD COST TBD after competition | APPROX. BUILD TIME Coming Soon | | DESIGNED BY Victoria Roznowski | | CONTACT Sales@iconbuild.com |

Beyond Shelter



Beyond Shelter

